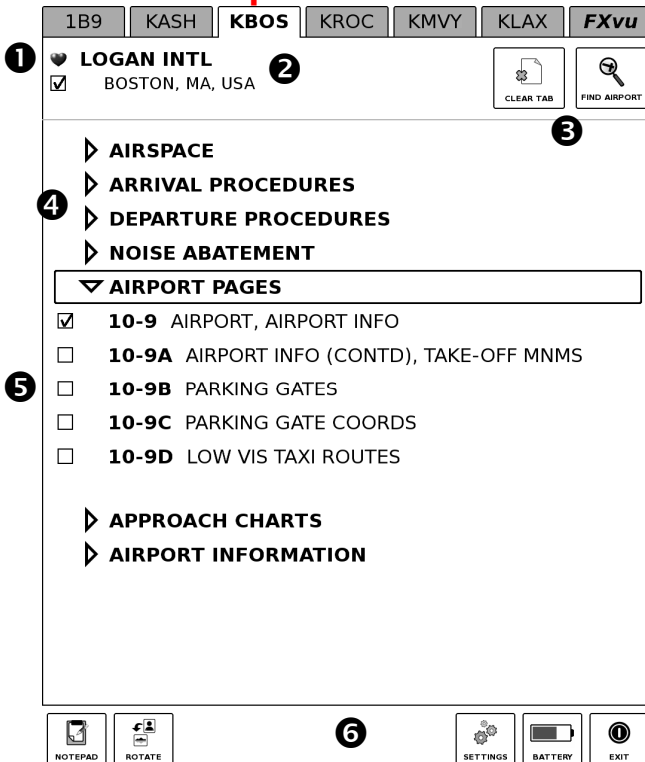
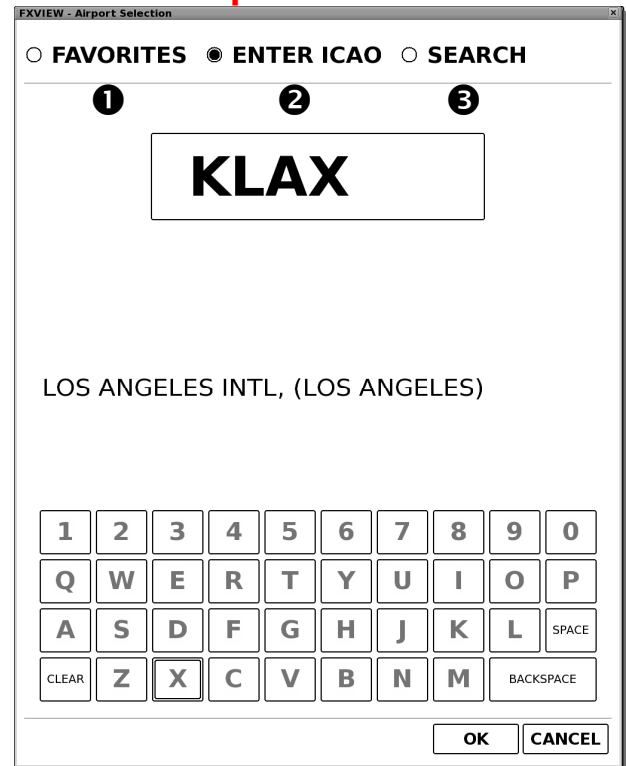


### Airport Notebook



### Airport Selection



#### Airport Notebook:

- ❶ Across the top are six (6) airport tabs followed by the FXvu tab for favorite charts.
- ❷ In this section is the active airport name. The heart preceding the name indicates favorite status. Below the name is the city, state, and country of the airport, preceded by the check box to set favorite status.
- ❸ On the right side below the FXvu tab are the buttons to clear tab or find a new airport for that specific tab.
- ❹ The airport notebook view includes collapsed categories for each different type of charts/information. Click on the title to expand the category.
- ❺ As shown the AIRPORT PAGES category is expanded and the first chart (10-9) is selected as a favorite. To open the chart simply click on the title of the chart. Click on the box to add the chart to the FXvu clipboard tab.
- ❻ At the bottom is the toolbar to access the notepad, rotate the screen, change the device settings, check the battery level, and exit FXVIEW/power off the device.

**Note:** In the settings menu you can choose which (if any) sensors you would like to lock, you can select the default format for the notepad, and you can select the default airport selection method.

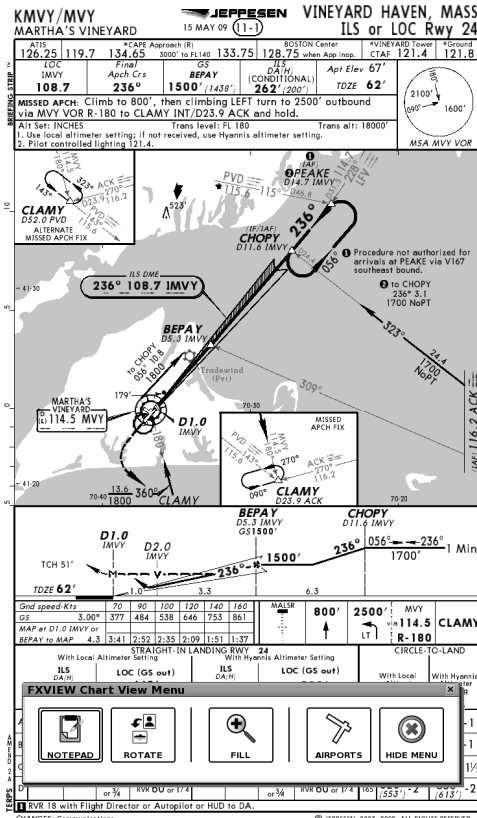
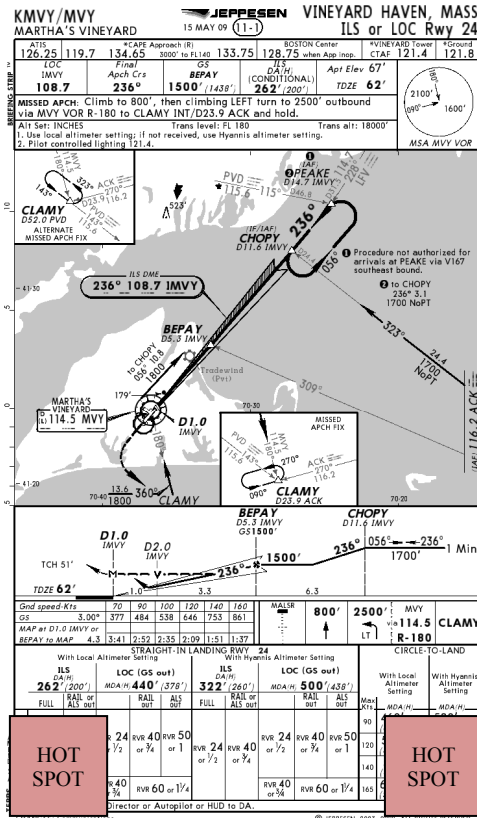
#### Airport Selection:

An airport can be selected in three (3) ways:

- ❶ From a list of favorites.
- ❷ By entry of the ICAO code for the airport.
- ❸ By a search for the location of the airport.

## Chart View

## Chart View with Menu Open



### Chart Viewing:

- Zoom w/ Sensors: Touch Up or Down Arrow Sensors to fit chart to screen width.
- Zoom w/ Stylus: Circle area you wish to enlarge and FX10 will fit that area to screen. To return to previous zoom level, tap the screen with Stylus.
- Pan w/ Stylus: Draw line from point to new point. FX10 will pan the screen so the point where your line started moves to the point where your line ended.
- Open Pop-up Menu: Tap Stylus in either screen corner "HOT SPOT" (illustrated by pink boxes in the lower left and right corners on the chart above and to the left) or touch middle bottom Sensor to display menu.
- Return to Airport Notebook: Three methods: 1) Tap Stylus on full chart view. 2) Touch Enter Sensor. 3) Open Pop-up Menu and select Airports icon.

### Sensor Unlock when Stylus lost procedure:

1. Reset FX10 by gently inserting any pen tip in small hole in unit, next to USB connector.
2. Sensors will be unlocked after unit resets.
3. Start FXVIEW and select/check "No Stylus" on initial splash screen - then select "YES".
4. FX10 will now be usable via sensors.